

## Help Us Provide Safe & Efficient Service

- Properly sort your materials. Scan the QR code at right for an online guide of what goes where.
- Bag loose trash and place in the garbage containers.
- Prevent overflow and litter-make sure your container lids close.
- Do not place items outside of your containers. Take advantage of our expanded on-call clean up program. For more information, contact us or visit [SanLeandroRecycles.com/clean-up](http://SanLeandroRecycles.com/clean-up)



## Organics/Compost Collection

**NEW! USED COOKING OIL\*:** Collect in one gallon or smaller, sealed screw-top containers less than 12" in height. Cart customers please place next to (*not inside*) your **organics** cart or bin, on the curb, not in the gutter. Customers with shared service will place containers at the designated curbside location determined by their complex owner/manager.



**HANDY KITCHEN PAIL:** Use to collect food scraps and food-soiled paper in your home. When full, empty the pail into your **organics** cart or bin. Need a pail? Contact us, we will deliver one.



## Recyclables Collection

**NEW! EXTRA CARDBOARD:** Flatten, cut into pieces no larger than two feet by three feet, and stack next to your **recyclables** cart or bin.



**HOUSEHOLD BATTERIES:** Customers with cart service can place household batteries in a zipper-style bag on top of (*not inside*) their blue **recyclables** cart for collection. Please tape the terminals on 9-volt batteries. **No automotive or liquid lithium ion batteries are allowed.** Multi-family customers with shared service can place bagged batteries at the designated curbside location determined by their complex owner/manager.



**RECYCLING TOTE BAGS:** Transport recyclables from your living unit to the **recyclables** collection container at your complex. One bag per unit provided at no charge. Contact us, we will deliver one.



**USED MOTOR OIL AND OIL FILTERS\*:** Place oil in one gallon or smaller, sealed screw-top containers less than 12" in height. **No other automotive liquids are accepted.** Place oil filters in sealed zipper-style bags. Cart customers can place jugs and bags next to (*not inside*) their **recyclables** cart, curbside, not in the gutter. Customers with shared service can place jugs and bags at the designated curbside location determined by their complex owner/manager.

## Garbage/Landfill Collection

**EXTRA GARBAGE BAG TAGS:** Customers with cart service can have overflow garbage collected when pre-paid extra bag tags are affixed to the bag(s). Contact us to buy tags or arrange for additional service.

\*We will collect up to three gallons of oil per week. **Do not mix oils in the containers.** Request oil jug and filter bag delivery by ACI.

## Proper Sorting is the Law

**California State law SB 1383 helps to keep compostable materials out of landfills. All multi-family complexes must:**



- Provide containers and service for **RECYCLABLE** & **ORGANIC** (including food scraps and compostable paper) materials.
- Provide information at least annually to employees, tenants, and contractors describing how to properly use the **RECYCLING**, **ORGANICS**, and **GARBAGE** collection containers.

To learn more, visit [StopWaste.org/Rules](http://StopWaste.org/Rules). To view this info in another language (Español, 中文, 한국어, & Tiếng Việt) please visit [StopWaste.org/rules-languages](http://StopWaste.org/rules-languages) ACI can help with compliance. Contact us to improve or start your **RECYCLABLES** and **ORGANICS** collection program and get help with training employees and tenants.

## Free the Organics Please No Bags

**Remember, only items that were once alive belong in the organics containers.**

The material is taken to a facility to create compost. Plastic, metal, and glass do **NOT** belong in the **organics** containers. Be especially mindful of film plastic; it is not easily recyclable, can get caught in sorting machinery, and is difficult to remove during **organics** processing.

**Thank you for your efforts!**



510-357-7282 • [SanLeandroRecycles.com](http://SanLeandroRecycles.com)

Contact Us:

**City of San Leandro  
Multi-Family  
Complex  
Service Guide**



**EXPANDED PROGRAMS & SERVICES AVAILABLE NOW!**  
SEE INSIDE FOR MORE INFO.

610 Aladdin Avenue, San Leandro, CA 94577

**Alameda County Industries**  
We are proud to be your service provider for **Recyclables, Organics & Garbage.**



## HAVE EXTRA OR BIG BULKY THINGS? USE THE EXPANDED ACI ON-CALL/BULKY ITEM CLEAN-UP PROGRAM FOR MULTI-FAMILY COMPLEXES

**The ACI of San Leandro clean up program allows for more recycling, reuse, and less waste.**

All multi-family residential customers may schedule an annual on-call bulky item clean up to discard overflow waste, bulky items, reusable items, and recyclable materials.

### A CLEAN UP COLLECTION INCLUDES:

- up to three cubic yards of reusable materials, recyclable materials, yard trimmings, and solid waste
- up to three bulky items - one item may be e-waste
- once per unit, per 12-month period, at no charge

Rules apply. For more info and , contact us or visit [SanLeandroRecycles.com/clean-up](http://SanLeandroRecycles.com/clean-up)

## THE HOLIDAY INFO

### Holiday Collection Schedule\*

- Thanksgiving Day, Christmas Day, and New Year's Day = **NO COLLECTION**
- All other holidays = **REGULAR COLLECTION**

### Curbside Holiday Tree Collection\*

- **WHEN?** During the first two full weeks in January on your regular collection day.
- **HOW?** Place clean green trees curbside.

\*Find more detailed information online at [SanLeandroRecycles.com/holiday](http://SanLeandroRecycles.com/holiday)





**ORGANICS/  
COMPOST**  
PLANTAS Y COMIDA  
有机堆肥



**FOOD SCRAPS**  
NO PLASTIC BAGS



**FOOD-SOILED PAPER**

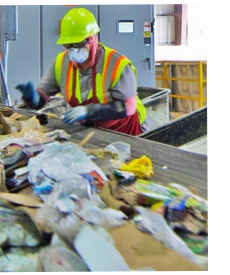


**PLANTS, YARD TRIMMINGS,  
& CLEAN WOOD**

**NO RECYCLABLES, METAL,  
GLASS, GARBAGE, PET WASTE,  
DIAPERS, PERSONAL HYGIENE  
PRODUCTS, STYROFOAM®, DIRT,  
BRICK, OR CONCRETE**



**YOUR  
RECYCLABLES  
ARE SORTED  
BY PEOPLE**  
*Thank you for  
properly sorting  
your waste.*



Our Materials Recovery Facility (MRF) sorting staff thanks you for keeping them safe by making sure needles, sharps, hazardous waste, garbage, and organic material is not in the recycling.

**KEEP ORGANICS LOOSE - DO NOT BAG. NO METAL, GLASS, OR PLASTIC. REGULATION SB 1383 REQUIRES ORGANICS SERVICE.\***



**RECYCLABLES**  
RECICLAJE  
可回收物



**CLEAN & DRY  
PAPER PRODUCTS**  
FLATTEN BOXES



**GLASS BOTTLES,  
JARS, & CONTAINERS**  
EMPTY & CLEAN



**ALUMINUM & METAL**  
EMPTY & CLEAN



**PLASTIC BOTTLES,  
TUBS, & CONTAINERS**  
EMPTY & CLEAN

**NO GARBAGE, PET WASTE,  
DIAPERS, PERSONAL HYGIENE  
PRODUCTS, STYROFOAM®,  
ORGANICS, DIRT, BRICK,  
CONCRETE OR PRESSURIZED  
TANKS**



**ACI HAS TOOLS TO HELP  
WITH SORTING WASTE**

**HANDY KITCHEN PAILS**  
are used to collect food scraps and food-soiled paper in your home. Simply empty the contents of the pail into your green organics cart or bin at your complex.



**AVOID CONTAMINATION BY KEEPING ITEMS CLEAN & DRY. PLEASE SCRAPE, WIPE, OR RINSE CONTAINERS. THANK YOU.**



**GARBAGE/  
LANDFILL**  
BASURA  
垃圾填埋场



**NON-RECYCLABLE  
GLASS, PAPER,  
& PAINTED WOOD**



**NON-RECYCLABLE  
PLASTICS**



**STYROFOAM®**



**DIAPERS, PET WASTE,  
& PERSONAL  
HYGIENE PRODUCTS**

**NO RECYCLABLES, DIRT,  
BRICK, CONCRETE, ORGANICS,  
HOT ASHES, OR PRESSURIZED  
TANKS**



**SPECIAL TOTE BAGS**  
make it easy to transport recyclables from your home to the blue recyclables cart or bin at your complex.



**AN ONLINE GUIDE**  
of what belongs in your collection containers can be found by scanning the QR code at right or visiting [SanLeandroSorts.com](http://SanLeandroSorts.com)




**REDUCE WASTE. IT'S ALWAYS BETTER TO REUSE, RECYCLE, COMPOST, OR DONATE THAN TO DUMP IN THE LANDFILL.**

*Need a pail or tote bag? Contact us!  
We will deliver one per unit at no  
additional charge.*



**NO SHARPS OR HAZARDOUS WASTE**  
*It is illegal to dispose of hazardous waste in any ACI collection container. Please take hazardous materials to a Household Hazardous Waste (HHW) collection facility. There is a fast, free drop-off at four locations in Alameda County. Visit [StopWaste.org/hhw](http://StopWaste.org/hhw) or call 1-800-606-6606 for more information.*

**When in doubt - find out! Have questions? Contact us!**



website [SanLeandroRecycles.com](http://SanLeandroRecycles.com)  
email [info@AlamedaCountyIndustries.com](mailto:info@AlamedaCountyIndustries.com)  
phone 510-357-7282  
office hours M - F, 7 am - 5 pm  
address 610 Aladdin Ave., San Leandro, CA 94577

\*Senate Bill 1383 and Alameda County's Mandatory Recycling Ordinance require recycling. Learn more by visiting [Stopwaste.org/Rules](http://Stopwaste.org/Rules)

Printed on recycled paper. Please recycle again. ©ACISL 012025