



## Alameda County Industries

We are proud to be your service provider for **Recyclables, Organics, & Garbage.**

# MOVE IN-OUT GUIDE Reduce Waste During Your Move

*Help our community to reduce waste, conserve resources, and comply with State and local laws.*

## Have extra, large, or bulky items you don't need or want?

Consider donating clean, working, usable items to a favorite local church, charity, or consignment shop, or use one of these resources:

Craigslist.org

Freecycle.org

Eastbaygoodwill.org

SATruck.org

## USE THE ACI ON-CALL BULKY ITEM CLEAN-UP PROGRAM

- All multi-family residential customers may schedule an on-call bulky item clean-up to discard overflow waste, recyclable materials, and bulky and reusable items.
- This service is available at no charge once per 12-month period.
- Tenants must coordinate with their complex owner or manager a suitable curbside location\* accessible to ACI collection vehicles **before** scheduling an on-call bulky item clean-up.
- For more information, contact ACI or visit [SanLeandroRecycles.com/cleanup](http://SanLeandroRecycles.com/cleanup)



## AN ON-CALL BULKY ITEM CLEAN-UP INCLUDES:

- collection of up to three cubic yards of reusable materials, recyclable materials, yard trimmings, and solid waste
- collection of up to three bulky items - one bulky item may be substituted with an electronic waste item

**\*PLEASE NOTE: You must share the agreed-upon curbside collection location with ACI personnel BEFORE setting out materials for proper service.**

## It's easy to be green when moving.



*Whether packing it up or just settling in, make your move as environmentally friendly as possible.*

- Use what you already have as packing material. Use your clothing, sheets, and towels to protect fragile or delicate items.
- Go online. Check Craigslist, Freecycle, Facebook Marketplace, etc., to find or offer reusable moving supplies.
- Pass it on. Moving companies like U-Haul may offer or accept gently-used boxes for reuse at no charge.
- Find a green moving company. Search for eco-minded movers who use reusable and recyclable moving supplies.
- Rent reusable. To avoid excess moving waste, find a reusable packaging rental company such as Zippgo or Rentacrate.

## NO SHARPS OR HAZARDOUS WASTE

It is illegal to dispose of hazardous waste such as batteries, fluorescent lightbulbs, paint, and needles in any ACI collection container. Please take hazardous materials to a Household Hazardous Waste (HHW) collection facility. There is a fast, free drop-off at four locations in Alameda County.

Visit [StopWaste.org/hhw](http://StopWaste.org/hhw) or call 1-800-606-6606 for more info.





**Alameda County Industries**

We are proud to be your service provider for **Recyclables, Organics, & Garbage.**

# MOVE IN-OUT GUIDE Reduce Waste During Your Move

*Help our community to reduce waste, conserve resources, and comply with State and local laws.*



BLUE = RECYCLABLES

GREEN = ORGANICS

GRAY = GARBAGE

**Whether moving in or moving out, your recyclables, organics, & garbage must "move" into the correct collection bin.**

### WE HAVE TOOLS TO HELP YOU WITH PROPER SORTING.

*Stop by the ACI office to pick up, or contact your complex manager or owner to arrange for the drop off of the following items.*

THE HANDY KITCHEN PAIL makes collecting food scraps and food-soiled paper in your home easy. Empty the pail into your green organics cart or bin when full.

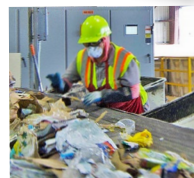


You can use SPECIAL TOTE BAGS to transport recyclables from your home to the blue recyclables bin at your complex. Please remember to keep your recyclables loose. Do not bag them. Recyclable items in bags are separated and disposed of as garbage at our sorting facility.



### PROTECT OUR SORTING STAFF

Our Materials Recovery Facility (MRF) sorting staff thanks you for keeping them safe by making sure needles, masks, gloves, wipes, tissues, garbage, organics, and anything with bodily fluids stay out of the recycling. Scan the QR code for a comprehensive list of what goes where, and a video that shows what happens to your recyclables after they are collected.



*Your recyclables are sorted by people. Thank you for properly sorting your waste.*

## IN EFFECT SINCE JANUARY 2022 California State Law (SB 1383) will help keep compostable materials out of landfills.

All San Leandro residents and businesses are required to have adequate organic waste collection services in place to recycle organic materials such as food scraps, food-soiled paper, and yard trimmings.



*Placing food scraps in the compost bin instead of the garbage helps fight climate change.*

Implementation of this local law is through a partnership between the City of San Leandro, ACI, StopWaste, and Alameda County Environmental Health Departments.



For more information, visit [StopWaste.org/Rules](http://StopWaste.org/Rules)

**Español, 中文, & Tiếng Việt**  
*To view this information in another language, please visit [StopWaste.org/rules-languages](http://StopWaste.org/rules-languages)*



**Questions?  
CONTACT US OR  
VISIT OUR WEBSITE  
TO FIND OUT MORE.**

website [SanLeandroRecycles.com](http://SanLeandroRecycles.com)  
email [info@AlamedaCountyIndustries.com](mailto:info@AlamedaCountyIndustries.com)  
phone 510-357-7282  
office hours Monday - Friday, 7am - 5pm  
address 610 Aladdin Avenue, San Leandro, CA 94577